

# OPERATOR'S MANUAL

INSTALLATION • OPERATION • MAINTENANCE  
SAFETY PRECAUTIONS • REPAIR PARTS

---

**WESTERN MULE**

FOLD - **A** - WAY  
CRANE

Model: **P10-AC**  
**120V-AC POWERED**

*1,000 Lb. MAXIMUM  
LIFTING CAPACITY*

SERIAL NO. \_\_\_\_\_

## **CAUTION**

THIS EQUIPMENT CAN BE POTENTIALLY DANGEROUS. THIS MANUAL MUST BE STORED WITH THE EQUIPMENT. ALL INFORMATION AND INSTRUCTIONS CONTAINED IN THIS MANUAL MUST BE READ IN FULL BY ALL OPERATORS OF THIS SYSTEM, AS WELL AS PERSONNEL SUPERVISING THE OPERATION OF THIS EQUIPMENT. FAILURE TO DO SO MAY RESULT IN UNSAFE CONDITIONS THAT COULD RESULT IN INJURY OR DEATH. IF ANY INSTRUCTIONS ARE UNCLEAR, CONTACT THE MANUFACTURER FOR CLARIFICATION PRIOR TO USE OF THE CRANE.

**Western Mule Cranes**  
1510 Merced Street  
Fresno, CA 93706 USA

Ph: 559-266-6977 Fax: 559-266-7437  
Email: [cranes@westernmule.com](mailto:cranes@westernmule.com)  
[www.westernmule.com](http://www.westernmule.com)

# READ THIS FIRST

---

**THIS MANUAL CONTAINS VERY IMPORTANT INFORMATION**  
ABOUT THE INSTALLATION AND OPERATION OF YOUR WESTERN MULE CRANE. FOR YOUR OWN SAFETY AND THAT OF FELLOW WORKERS, READ THIS MANUAL COMPLETELY PRIOR TO ATTEMPTING INSTALLATION OR OPERATION OF THE WESTERN MULE CRANE.

The information in this manual is intended to help insure that your Western Mule Crane is installed properly and operated safely.

Although every effort has been made to make this manual complete and understandable, it is not a definitive guide to every possible situation or circumstance.

The safe operation of this product is directly dependent on the operator's skill, knowledge and judgment.

To avoid hazardous situations, every operator must be knowledgeable with appropriate safety guidelines, codes and regulations that are applicable. Remember that a uniformed or careless operator can make the operation of any equipment dangerous.

**Ultimately the owner/operator must make the final decision as to how this product will be used and whether that intended use is safe. Keep in mind that every piece of equipment has its limitations.**

After reading this manual in its entirety, should you have any questions regarding the installation or the safe use/operation of a Western Mule Crane, contact your Dealer or Western Mule Cranes Customer Service Department for assistance.

Replacement manuals are available from your Dealer or:

## **Western Mule Cranes**

1510 Merced Street

Fresno, CA 93706 USA

Ph: 559-266-6977 Fax: 559-266-7437

E-Mail: [cranes@westernmule.com](mailto:cranes@westernmule.com)

[www.westernmule.com](http://www.westernmule.com)

# TABLE OF CONTENTS

<b>READ THIS FIRST</b>	Page 2
<b>A WORD TO OWNER, OPERATOR, AND SERVICE PERSONNEL</b>	Page 5
<b>INTRODUCTION</b>	Page 6
<b>ILLUSTRATION</b>	Page 7
<b>SAFETY – SAFE OPERATION</b>	
General Operation	Page 8
Making the lift	Page 10
Load Chart	Page 11
Storing the Crane	Page 12
Rotation Brake	Page 12
Emergency/Auxiliary Hand Crank	Page 13
<b>INSTALLATION</b>	
Preparing for Installation	Page 13
Installation	Page 14
Bolt Torque Specifications	Page 15
<b>INSPECTION</b>	
Daily Inspection	Page 16
Lifting Cable & Hook Inspection	Page 18
<b>MAINTENANCE</b>	
CABLE Replacement	Page 19
<b>PARTS</b>	
Replacement Parts	Page 20
Winch Parts	Page 21
<b>GENERAL PRODUCT INFORMATION</b>	Page 22
<b>REPLACEMENT PART ORDERING INFORMATION</b>	Page 22
<b>PRODUCT REGISTRATION</b>	Page 22
<b>WARRANTY</b>	Page 23



# A WORD TO THE OWNER/EMPLOYER, OPERATOR AND SERVICE PERSONNEL ABOUT SAFETY

---

This manual was written with the safety of the operator and others who work around this equipment as our goal.

**IT IS THE OWNER/EMPLOYERS' RESPONSIBILITY** to know the specific requirements, governmental regulations, precautions and work hazards which may exist. You should make these known to all personnel who are working with the equipment or in the work area, so all necessary precautions and required safety procedures are followed. Failure to heed these instructions can result in serious personal injury and or death.

**IT IS THE OWNER/EMPLOYERS' RESPONSIBILITY** to instruct and insure that all operators understand the safe operation of the Western Mule Crane and to provide the operator with properly maintained equipment.

Anyone who will operate, service or work around this crane should first read and fully understand this manual. Death or serious personal injury can result from improper use or maintenance of this Western Mule Crane.

**IT IS YOUR RESPONSIBILITY** to operate and maintain your Western Mule Crane with skill, good judgment, and caution. Following recognized safety procedures will help prevent accidents. Modification to any part of the Western Mule Crane can create a safety hazard and therefore shall not be made without the manufacturer's prior approval. Use only factory-approved parts to repair or maintain the Western Mule Crane.

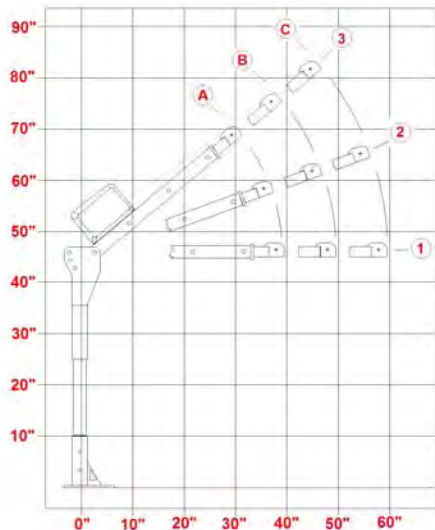
Keep children, visitors, and unauthorized personnel away from the work area.

**Be capable, careful, and concerned!**

**Make safety your everyday business!**

## LOAD CHART

Boom Position	A	B	C
3	1000	870	800
2	1000	835	700
1	1000	800	600



# INTRODUCTION

---

**WESTERN MULE CRANES** have been engineered to provide safe, trouble-free, dependable service for many years when these products are properly used and maintained.

In the event that a Western Mule Crane receives a warranty claim, it is our policy to respond to the claim as promptly as possible. If material or workmanship is involved immediate, corrective action is taken. It is therefore, understandable that Western Mule Cranes will not assume responsibility, or liability, when one of our products has obviously been abused, misused, overloaded, or otherwise damaged by inexperienced persons trying to operate the equipment without ever reading this manual. The Western Mule is designed and built to be safe and efficient. Western Mule Cranes will not assume responsibility or liability for any unit which has been modified, changed, or has unauthorized, unapproved components installed.

Western Mule Cranes maintains a strong Distributor network and knowledgeable Customer Service Department. In most cases, equipment related problems could be solved through a telephone conversation with a service representative. If through no fault of Western Mule Cranes it becomes necessary to send an experienced factory technician on a field call, all charges incurred will be billed to the customer.

The Occupational Health and Safety Act of 1970 state that it is the employer's responsibility to provide a work place free of hazard. To accomplish this, all equipment should be installed, operated, and maintained in compliance with applicable trade, industrial, federal, state, and local regulations. It is the responsibility of the equipment owner to obtain copies of these regulations and, from these, to determine the suitability of the equipment to any particular use.

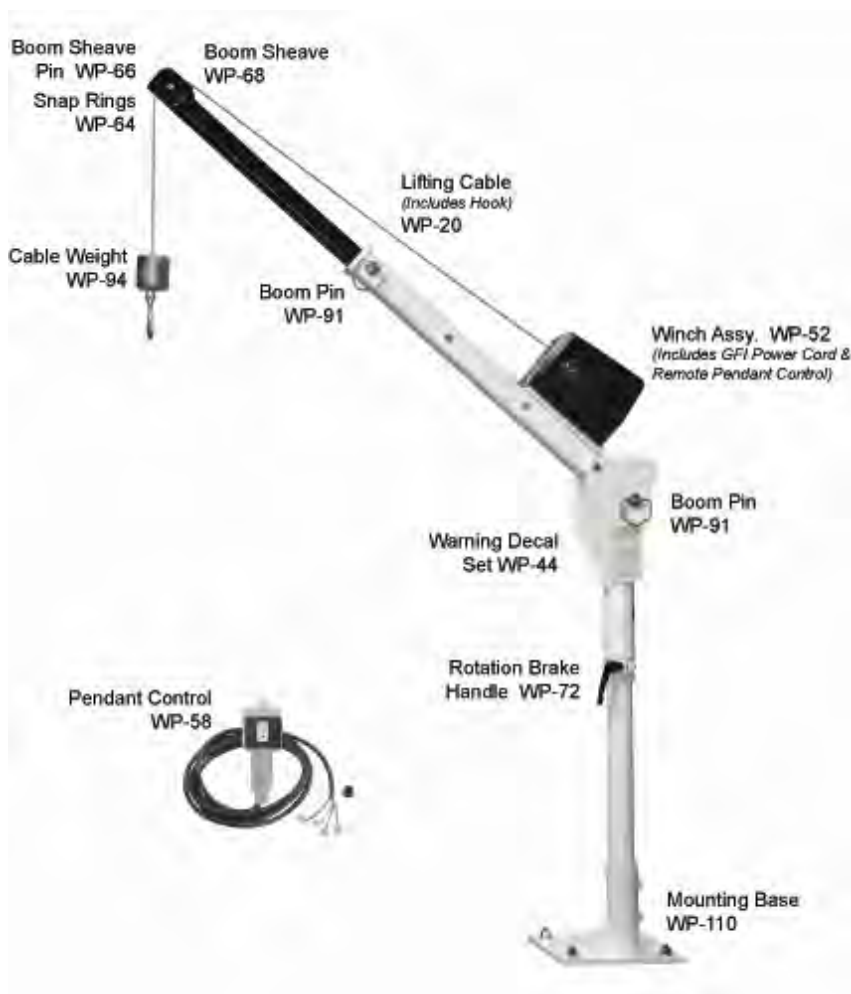
This owner's manual and all labels attached to the product are intended to serve as guidelines for hazard free installation, operation, and maintenance. They are not however, intended to prepare the user for every possible situation. It is the responsibility of the equipment owner to keep this owner's manual, all labels legible, and available with the crane at all times. If they should become lost or illegible, immediately order replacements from the factory.

The material herein does not imply to cover all maintenance instructions, operating instructions, or variations to every possible situation. If additional information is required, please refer to Western Mule Cranes the following telephone number (559) 266-6977. The information contained in this manual was in effect at the time of printing. Western Mule Cranes reserves the right to update this manual at any time without notice.

# P10-AC ILLUSTRATION

---

Refer to this illustration until you become familiar with the operation of the crane.



# GENERAL OPERATION

## CAUTION

THE FOLLOWING CONTAINS SOME GENERAL PRECAUTIONS THAT MUST BE CAREFULLY FOLLOWED WHEN INSTALLING, OPERATING, OR MAINTAINING WESTERN MULE CRANES.

## WARNING

**WARNING:** THIS CRANE IS NOT DESIGNED OR INTENDED TO BE USED AS A HOIST FOR LIFTING, SUPPORTING OR TRANSPORTING PEOPLE OR LOADS OVER AREAS WHERE PEOPLE COULD BE PRESENT.

This Crane **must be** operated by persons, both qualified and trained in its safe use and then only in accordance with the manufacturer's instructions and applicable governmental safety requirements.

**READ AND OBEY ALL** information contained in this operator's manual and on all placards and decals attached to the Western Mule Crane. A careless or unformed operator can make the use of any equipment dangerous and may cause property damage, serious personal injury, and/or death.

**KEEP ALL** bystanders clear of the operation area to prevent obstruction of the operation and/or to avoid serious personal injury and/or death.

**KEEP** hands away from sheaves, lifting cable, pinch points and, moving parts of the crane, which may cause serious personal injury and/or death.

**ALWAYS** be certain the rigging that you intend to use is capable of withstanding the load. Never wrap the lifting cable around load. This will cause damage to the lifting cable.

**DO NOT** divert your attention from the Western Mule Crane while an operation is being performed.

**CONSTANTLY** check for signs of damage or poor operation. Make sure that the load remains unobstructed and securely attached.

**AVOID** lifting loads over persons or the operator himself. To do so may cause serious personal injury and/or death.

**DO NOT** operate the Western Mule Crane if signs of damage or poor operation, are noticed. To do so may result in property damage, serious personal injury, and/or death. Place a "**DO NOT USE - CRANE OUT OF ORDER**" sign on the Western Mule Crane and in the vehicle.



# GENERAL OPERATION

---

Do not use until the Western Mule Crane is repaired and a qualified maintenance person who has seen to the complete correction of the problem and inspection of the crane removes the signs.

**KNOW** the weight of the load you are lifting, to avoid overloading the Western Mule Crane.

**DO NOT** overload the Western Mule Crane or exceed the load rating of the weakest component in the system (I.E. the lifting cable, sling, lifting attachment, etc.). Overloading may result in damage and/or failure of the equipment, which may lead to serious personal injury and/or death.

**DO NOT** use two cranes to move a load that is greater than the load rating of a single crane. A shift in the load may place all the weight on one crane, which may overload the equipment and/or cause it to fail.

**MAKE SURE** that at least a minimum of 5 wraps of lifting cable remain on the winch drum at all times in order for the lifting cable to remain securely anchored to the winch drum.

**ALWAYS** keep your hands away from the lifting cable while tensioned and from moving parts while in use.

## CAUTION

**CAUTION:** THIS CRANE HOIST MOTOR IS EQUIPPED WITH A GROUND FAULT CIRCUIT INTERRUPTER. THIS CRANE MUST ONLY BE USED WITH A THREE PRONGED GROUNDED OUTLET. DO NOT REMOVE THE GROUNDING PRONG ON THE POWER CORD FOR ANY REASON.

**NEVER** handle the lifting cable/rigging while anyone else is at the controls.

**DO NOT** shock load/bounce or swing the load. Such violent motions may momentarily exceed the cranes maximum load rating. Overloading the Western Mule Crane may cause the crane to fail or cause serious personal injury and/or death.

**DO NOT SIDE LOAD THE WESTERN MULE CRANE** The Crane shall not be used for dragging or pulling loads sideways across a surface. To do so may strain the equipment resulting in its damage and/or failure.

**DO NOT** alter or modify the Western Mule Crane or any of its components. Do not operate the crane using any form of power other than that which it is specifically intended to use. To do so may reduce the load rating of the crane and/or cause the crane to fail.

# MAKING THE LIFT

---

This section is designed to present some of the general precautions that must be taken by the operator when making a lift with the Western Mule Crane.

**WEAR** a protective hard hat while raising loads.

**NEVER** stand beneath a load.

**DO NOT** exceed load limits of the Western Mule Crane as shown on the warning decals.

**NOTE:** Crane ratings are based upon crane lifting capacity. Not the crane's stability.

**KEEP** tension on the lifting cable at all times.

**NEVER** wrap lifting cable around load.

**NEVER** pull the lifting hook or hook eye fittings into the boom sheaves.

**ALWAYS** center the tip of the boom over the load to be lifted.

**NEVER** attempt to side load, drag or pull loads across a surface.

**NOTE:** To do so may strain the crane, resulting in damage and/or failure

**ALWAYS** maintain a minimum of five (5) wraps of lifting cable on the winch drum.

**BE SURE** that the load is well secured and properly balanced in the sling or lifting device before it is lifted more than a few inches.

**ALWAYS** allow the load to come to a full stop before reversing direction.

**NEVER** raise the load being lifted any higher than needed when moving the load.

**KEEP** work area clear. **DO NOT** allow unauthorized people in the work area while lifting a load.

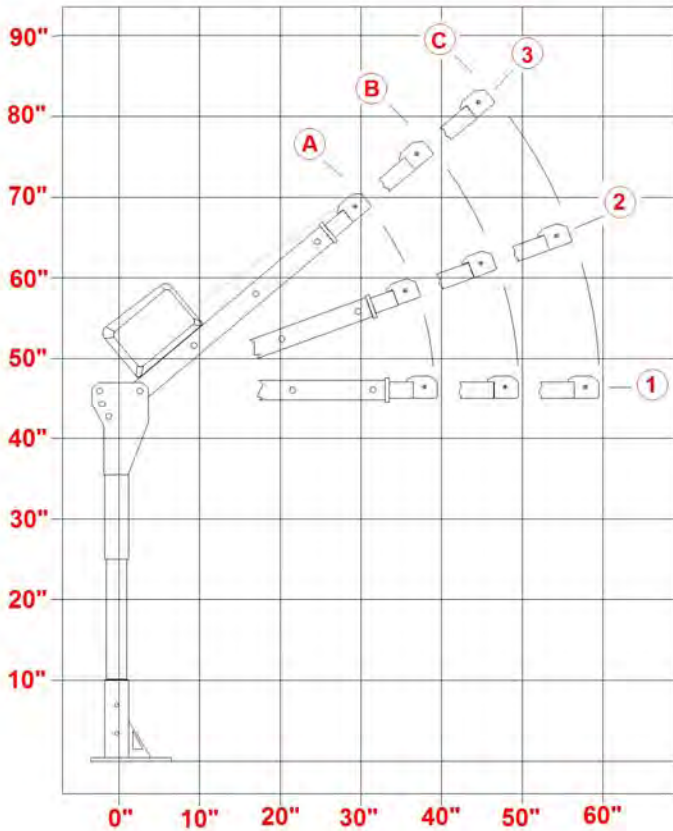
**NEVER** place a chain link on the tip of the lifting hook or attempt to lift a load from the tip of the lifting hook.

**DO NOT** leave suspended load unattended.

**DO NOT** attempt any service or repair while the Western Mule Crane is operating.

**NEVER** use a sling or anything larger than the hook throat that could prevent the latch from closing when lifting a load.

# LOAD CHART



Weight (lbs.)

Boom Position	A	B	C
3	1000	870	800
2	1000	835	700
1	1000	800	600

## STORING THE CRANE

---

1. Return the crane to its stored position, securing the boom into the boom rest.
2. Report any unusual occurrence during crane operation that may require maintenance or repair.
3. Disconnect the power cord when not in use.

## ROTATION BRAKE

---

The model **P10** crane is equipped with a Rotation Brake. This feature offers an advantage in many lifting and lowering situations, where it may be desirable to hold the boom in a fixed point of rotation.

***When using the Rotation Brake:***

**NEVER** attempt to drag a load or induce any side loading to the boom. Doing so may cause damage to the Rotation Lock and also overload the Western Mule Crane

**NEVER** swing a load suspended from the lifting cable while the Rotation Brake is engaged or at any time while a load is suspended.

**NEVER** work on a load while it is suspended on the lifting cable.

**DO NOT** engage the Rotation Brake while the mast/boom are rotating. Always bring the rotation of the mast/boom to a halt and then engage the Rotation Brake.

### CAUTION

**MAXIMUM CONTINUOUS RUN TIME 4 MINUTES**

**CAUTION: CONTINUOUS RUNNING IN EXCESS OF 4 MINUTES EXCEEDS THE DUTY CYCLE OF THE MOTOR AND CAN CAUSE DAMAGE TO THE MOTOR.**

# AUXILIARY CRANK HANDLE

---

The model **P10** crane is equipped with a emergency hand crank handle in the event of power failure.

Remove the plastic plug from the side of the winch housing and insert the handle so that it completely engages with the drive shaft. The handle can be cranked in either direction.

## **WARNING**

**WARNING:** NEVER OPERATE THE WINCH ELECTRICALLY WITH THE EMERGENCY CRANK HANDLE IN PLACE. DOING SO IS DANGEROUS AND MAY CAUSE INJURY!

# PREPARING FOR INSTALLATION

---

## **CAUTION**

THE MANUFACTURER CANNOT FORESEE THE MANY VARYING TYPES OF PLATFORMS THAT INSTALLATIONS MAY BE PERFORMED ON. EACH INSTALLATION SHOULD BE EVALUATED BEFOREHAND TO ENSURE THAT THE STRUCTURAL INTEGRITY IS SUFFICIENT TO HANDLE THE EXTRA WEIGHT OF THE CRANE WITH THE MAXIMUM LOAD RATING OF THE CRANE, AS WELL AS SHOCK LOADING THAT MAY OCCUR.

The **P10** crane can be mounted on any pickup, flat bed truck, trailer, and utility body or in a cube van in sound condition, loading dock or other secure and rigid platform.

**BEFORE** installing the Western Mule Crane, consult applicable codes and regulations for specific instructions and rules regarding the installation of mobile cranes.

**DO NOT** install the Western Mule Crane in an area that contains corrosive chemicals, combustible materials, explosives or other elements which may cause property damage, serious personal injury and/or death.

**DO NOT** install the Western Mule Crane on a vehicle or platform that is not in good sound mechanical working condition.

**BEFORE** placing the Western Mule Crane into service, thoroughly inspect it.

# INSTALLATION

---

1. Un-box the Western Mule Crane and check the packing slip to verify the contents.
2. Determine where the Western Mule Crane is to be mounted, insuring that the structural integrity is sufficient to handle the loads that the vehicle or platform will be subjected to while lifting with the crane.
3. Position mounting base in desired location for handling your load needs. Take in consideration where the boom will be stored.
4. Try to anticipate the size of the object to be loaded and load placement.
5. When mounting to a vehicle or a platform, reinforcement may be necessary. For example, in a truck bed installation, it will be necessary to reinforce the underside of the truck bed, bumper, or platform that the crane is being mounted upon. One method is using a bottom plate 3/8" thick or larger, mounted to the underside of the bed, under the crane base plate. The bottom plate should be large enough to cover the 4 holes in the mounting base of the crane and long enough to reach the vehicle frame. Each application will vary.
6. Before drilling holes in a bed, check underside of bed for location of frame and cross members. Mark and drill holes using base plate as the guide. (CAUTION: Before drilling of holes, be sure and avoid wiring, brake and fuel lines, and fuel tanks)
7. Fasten the crane to the vehicle or platform, using no less than 9/16" grade 8 bolts. (Refer to table, page 13 for torque specifications)

## CAUTION

**CAUTION:** THIS CRANE HOIST MOTOR IS EQUIPPED WITH A GROUND FAULT CIRCUIT INTERRUPTER. THIS CRANE MUST ONLY BE USED WITH A THREE PRONGED GROUNDED OUTLET. DO NOT REMOVE THE GROUNDING PRONG ON THE POWER CORD FOR ANY REASON.

8. Route the power cord to a 120V-AC 10-amp minimum power outlet in a manner that is clear of the work area.

# INSTALLATION

---

**NOTE:** IF UTILIZING AN EXTENSION CORD TO POWER THIS CRANE. USE ONLY HEAVY DUTY, THREE PRONG EXTENSION CORD CAPABLE OF HANDLING 10-AMPS MINIMUM. PLEASE KEEP IN MIND VOLTAGE DROP WHEN USING EXTENSION CORDS OF EXCESSIVE LENGTH WHICH MAY NEGATIVELY EFFECT THE PERFORMANCE OF THE CRANE, REDUCING THE DUTY-CYCLE OF THE MOTOR.

9. Inspect crane fully before placing in operation.
10. Your crane is now ready for operation. Refer to operation section of this manual before operating. Read it carefully and follow all instructions for proper and safe procedures.

## BOLT TORQUE SPECIFICATIONS

---

**Table 1**

UNC Size	Grade 8 Tightening Torque
9/16" - 12	150 +/- 15
5/8" - 11	215 +/- 15

**NOTE:** Torque values are in foot-pounds. Torque values specified are with residual oils or no special lubricants applied to the bolts. If special lubricants of high stress ability, such as never-seize compound, graphite, oil or molybdenum disulfide, etc. are used multiply the torque figures in the chart by a factor of .90.

Torque values for bolts listed above are not affected with the use of Loctite or similar product. Hardened washers should be used with Grade 8 or better bolts.

### CAUTION

**CAUTION:** ALWAYS WEAR SOME FORM OF HAND PROTECTION. LIFTING CABLE CAN CAUSE SERIOUS INJURY TO YOUR HANDS.

# DAILY INSPECTION

---

## WARNING

**WARNING: SAFE OPERATION DEPENDS ON YOU, THE CONDITION OF YOUR EQUIPMENT AND YOUR MAINTENANCE AND INSPECTION PROCEDURES.**

The single most important factor in the prevention of equipment failures and accidents is a positive attitude towards safety. The habit of anticipating possible problems normally prevents many accidents from occurring.

**The crane shall be inspected by the user daily before each use and additionally by a competent person other than the user at periodic intervals.**

Inspection checks **must be** performed. On the following page are several important inspections that should be performed before and during **each** operation of the Western Mule Crane. Inspection checks **must be** performed. Below are several important inspections that should be performed before and during **each** operation of the Western Mule Crane.

1. **FASTENERS** – visually check all pins, retainers, bolts, and nuts. Check for presence and proper tightness.
2. **SHEAVES** – check for lifting cable wear, cracks and ease of rotation. If they do not turn freely or the bushings in the sheaves are worn, replace them immediately.
3. **LIFTING CABLE** – check for frayed edges, broken strands, kinks, and flat spots. If damaged, replace before use. (*See page 15 for cable inspection procedures*)
4. **WINCH** – check lifting cable for proper spooling on the winch drum.
5. **CRANE HOOKS** – check hook and safety catch for twist or distortion. (*See page 15 for hook inspection procedures*)
6. **POWER CORD** – Periodically check the power cord for wear or frays which could cause electrical shorts or shocks.
7. **OPERATING PLACARDS AND SAFETY DECALS** – check for missing, illegible, defaced decals and placards.
8. Make necessary repairs of the above items and/or replacements before operating the Western Mule Crane.



# DAILY INSPECTION

---

## WARNING

**WARNING: DO NOT OPERATE THE WESTERN MULE CRANE IF SIGNS OF DAMAGE OR POOR OPERATION, ARE NOTICED TO DO SO MAY RESULT IN PROPERTY DAMAGE, SERIOUS PERSONAL INJURY AND/OR DEATH. PLACE A “DO NOT USE CRANE OUT OF ORDER” SIGN ON THE WESTERN MULE CRANE AND IN THE VEHICLE. DO NOT USE UNTIL THE WESTERN MULE CRANE IS REPAIRED AND A QUALIFIED MAINTENANCE PERSON WHO HAS SEEN TO THE COMPLETE CORRECTION OF THE PROBLEM AND INSPECTION OF THE CRANE, REMOVES THE SIGNS.**

D & S Sales recommends and government regulations require that an employer shall perform frequent and periodic inspections and maintain results of these inspections for each Western Mule Crane and that a competent person shall make a thorough annual inspection of the crane. The employer shall maintain a record of the dates and results of the inspections for each crane and its optional equipment.

# INSPECTION OF LIFTING CABLE AND HOOK

---

Many variable factors can cause the deterioration of the lifting cable that it is not possible to pre-determine a definite life expectancy.

Some of the contributing factors are:

1. Load being lifted
2. Corrosive conditions
3. Maintenance of the Western Mule Crane
  - a. Sheaves not turning freely
  - b. Improper spooling on winch drum.
  - c. Kinks in lifting cable
  - d. Abrasive action and contact with sharp corners.
4. Storing crane with lifting cable excessively tight.
5. Frequency of use

Keeping the working load ratings in mind and knowing the kind of loads that will be handled, the user can determine by inspection of the lifting cable as to when the lifting cable should be replaced.

Items to look for while inspecting lifting cable are:

1. Broken strands
2. Kinks and flattened sections
3. Corrosion and abrasion
4. Distortion of the lifting cable, such as kinking, crushing, etc.

Items to look for while inspecting the lifting hook are:

1. Bent or twisted hook
2. Damaged or non-operable safety latch
3. Hook is securely attached to the lifting cable

## **WARNING**

**WARNING: STOP USING THE HOIST AND REPLACE THE LIFTING CABLE OR HOOK IF ANY OF THE DEFECTS LISTED ARE FOUND.**

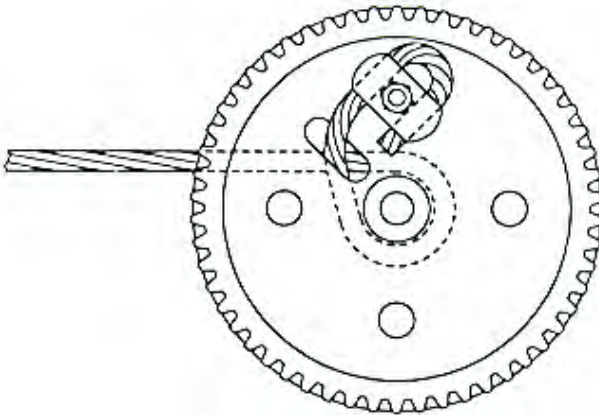
# CABLE REPLACEMENT

---

The lifting cable must be installed and spooled as shown in the illustration below, or the brake **MAY NOT FUNCTION**.

If it becomes necessary to replace the lifting cable.

Use only 25' X 3/16"- 7x19 Galvanized Steel Aircraft Cable, Part #WP-22.



When inserting the lifting cable into the drum, insert it into the correct end of the hole as shown above. Tighten the set screw securely.

With the end of the cable securely installed, carefully wind the length of the lifting cable onto the drum.

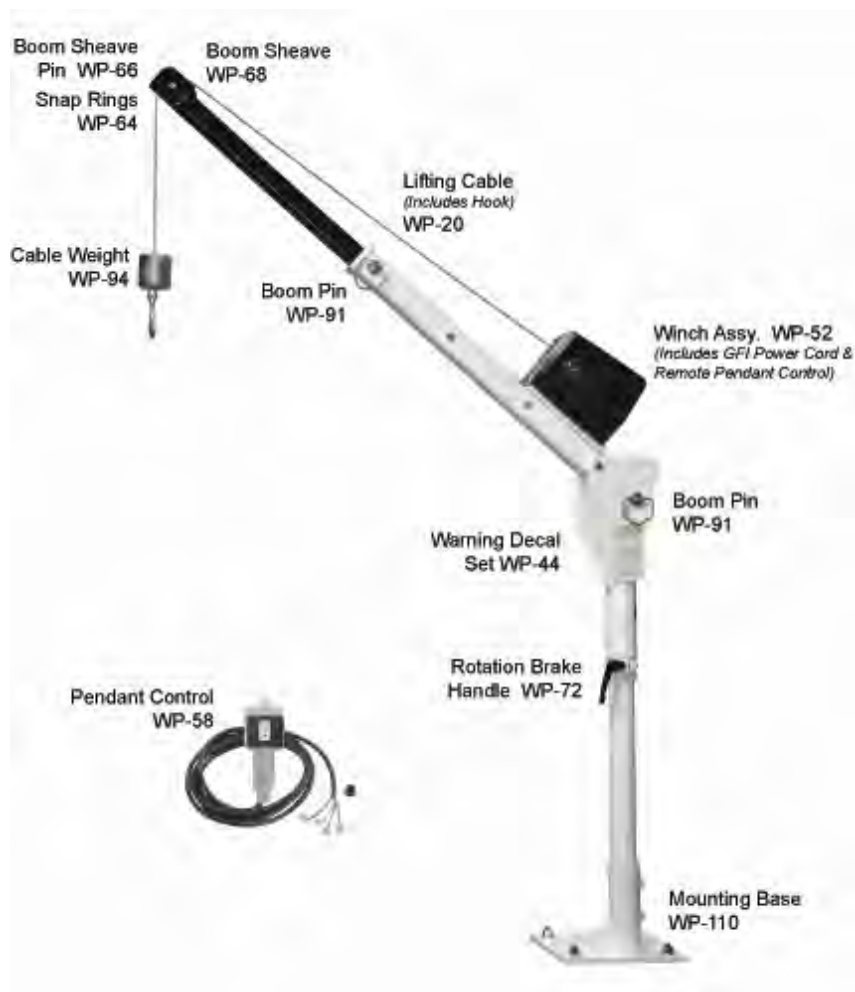
## **⚠ WARNING**

**WARNING:** ALWAYS MAINTAIN A MINIMUM OF 5 FIVE WRAPS OF LIFTING CABLE ON THE DRUM AT ALL TIMES. FEWER WRAPS MAY RESULT IN THE END OF THE LIFTING CABLE PULLING FREE OF THE DRUM AND DROPPING THE LOAD.

## P10 PARTS DIAGRAM

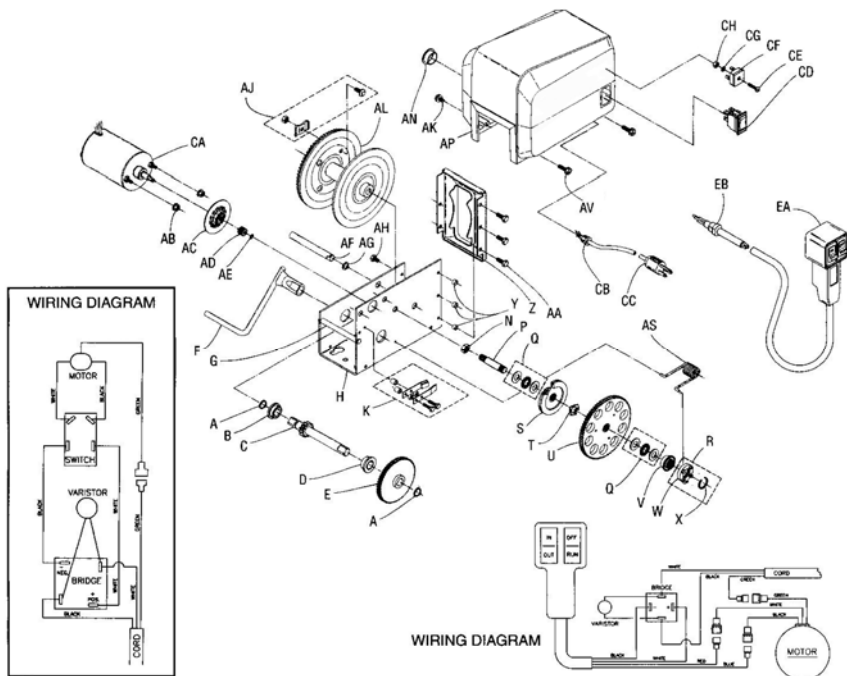
---

When ordering parts, please supply your crane's model and serial number. Parts may be obtained through your local dealer or distributor.



# WINCH PARTS

When ordering, please supply your crane's model and serial number.  
Parts may be obtained through your local dealer or distributor.



Ref. Part	Number
A Retaining Ring (2)	205191
B Bushing	204012
C Drive Shaft Ass'y.	304813
D Bushing	204009
E 56T Gear	204703
F Handle Ass'y.	304412
G Base Spacer	404557
H Base	404922
K Brake Spring Replacement Kit	6380
N Locknut, 7/16-20	205192
P Clutch Stud	404517
Q Thrust Bearing Replacement Kit (Includes Item X)	6381
S Clutch Gear Ass'y.	304305
T Finger Spring Washer	205200
U 120T Gear Ass'y.	304409
V Clutch Handle Nut	404518
W Clutch Spring Keeper	204721
X 'O' Ring	204770
Y Front Plate Spacer (3)	404562
Z Front Plate	404553
AA Screw-1/4-20x5/8 (3)	205238

Ref. Part	Number
AB Locknut, 10-32 (2)	205193
AC Brake Disc Ass'y.	304407
AD Motor Pinion	404522
AE 'E' Ring	205135
AF Reel Shaft	404559
AG Retaining Ring	204468
AH Screw, 1/4-20x3/8 (2)	205337
AJ Cable Clamp Kit	6285
AK Screw, 1/4-20x3/4 (2)	205338
AL Reel Ass'y.	304812
AN Cover Plug	204713
AP Cover-SA5000AC/7000AC	404564
AP Cover-SA5015AC/7015AC	404582
AS Clutch Spring	204661
AU Cable & Hook-3/16x50' (SA7000AC)	6211
AV Screw, 1/4-20x7/8 (2)	205242
AW Top Decal (Not Shown)	204895
AY D-L Decal (Not Shown)	204729
AZ Clutch Decal (Not Shown)	204731

Ref. Part	Number
CA Motor Ass'y.	304309
CB Strain Relief Bushing	204912
CC GFI Power Cord	5240189
CD Switch	204419
CE Cap Screw	205180
CF Bridge Ass'y.	304426
CG Washer	205194
CH Hex Nut, 8-32	205195
<b>REMOTE SWITCH</b>	
EA Switch Ass'y.	304705
EB Strain Relief Bushing	205037

## GENERAL INFORMATION

---

The WESTERN MULE CRANE, model **P10** is designed to handle loads up to 1000 lbs. and rotate right or left 360 degrees, non-continuous.

You **MUST** change rotation direction to keep from damaging the electric power wiring.

Practice using the crane with lighter loads, until you become familiar with the safe operation of the crane.

**DO NOT** overload the Western Mule Crane or exceed the load rating of the weakest component in the system (I.E. the lifting cable, sling, lifting attachment, etc.). Overloading may result in damage and/or failure of the equipment, which may lead to serious personal injury and/or death.

**DO NOT SIDE LOAD THE WESTERN MULE CRANE.** The Crane shall not be used for dragging or pulling loads sideways across a surface. To do so may strain the equipment resulting in its damage and/or failure.

**DO NOT** alter or modify the Western Mule Crane or any of its components. Do not operate the crane using any form of power other than that which it is specifically intended to use. To do so may reduce the load rating of the crane and/or cause the crane to fail.

**MAKE SURE** that at least a minimum of 5 wraps of lifting cable remain on the winch drum at all times in order for the lifting cable to remain securely anchored to the winch drum.

**ALWAYS** return the Western Mule Crane to its stored position before moving vehicle.

## REPLACEMENT PARTS

When ordering, please supply your crane's model and serial number. Parts may be obtained through your local dealer or distributor.

## PRODUCT REGISTRATION

Every effort is made to supply product updates and other information relevant to the use of this crane. To register your crane, we request that you do this online on our *Support Page* at [westernmule.com](http://westernmule.com) click on *Warranty Registration* at the top of the page. If you do not have internet access, please fax or mail the enclosed warranty registration card.

## **WESTERN MULE CRANES**

1510 Merced Street  
Fresno, CA 93706  
Phone (559)266-6977



FOLD-  
AWAY  
CRANE

# **LIMITED WARRANTY 1 YEAR PARTS AND LABOR**

The manufacture, warrants to the original retail purchaser it's product, the Western Mule, for twelve months (one year) from the date of delivery that your new Western Mule Crane is free from defects in material and workmanship if properly set up and operated in accordance with the recommendations set forth in the Western Mule Owner's Manual. If a date cannot be established, then the date the product was sold by the Distributor will be used.

Obligation of the manufacture, under this warranty, is expressly limited to the replacement or repair of parts, which prove defective in material or workmanship for the duration of this warranty. To make a claim under this warranty, the product must be returned, freight prepaid to the manufacture. The sole measure of damages shall be limited to the price of defective parts.

This warranty does not obligate the manufacture to bear the cost of labor in the field or transportation charges in connection with replacement or repair of defective parts.

Factory authorized repair or replacement as provided under this warranty is the exclusive remedy to the consumer. The manufacture shall not be liable for any incidental or consequential damages or for breach of any express or implied warranty on this product.

Any damage to the Western Mule, as a result of abuse, misuse, overloading, negligence, accidents, improper installation or any unauthorized alteration, repair or modifications made without written authorization by the manufacturer or any act that violates the instructions furnished by the manufacture, will void the warranty.

**NO** representative of the manufacture has the authority to amend or modify the warranty or to bind the company by any other warranty, guarantee or assumption of liability. There are no warranties, which extend beyond the above description and it is expressly understood and agreed that no warranty of merchantability or warranty of fitness for particular purpose, or other warranty express, implied or statutory is made.

**FREIGHT CHARGES** - This warranty does not cover freight charges incurred to return defective parts to the manufactures location or the shipment of replacement parts to the warranty holder.

**EXCLUSION** - There is no warranty on the lifting cable against breakage or fraying.

Certain limitations expressed herein are excludable in accordance with provisions of local law. Such limitations shall be deemed struck if such law is applicable. All other limitations and provisions shall continue to apply.

**MANUFACTURED AND DISTRIBUTED BY**

**Western Mule Cranes**

**1510 Merced Street**

**Fresno, CA 93706 USA**

**Ph: 559-266-6977 Fax: 559-266-7437**

**E-Mail: [cranes@westernmule.com](mailto:cranes@westernmule.com)**

**[www.westernmule.com](http://www.westernmule.com)**

Western Mule Cranes reserves the right under its product improvement policy to change construction or design details and furnish equipment when so altered without reference to illustrations are specifications used.

*Made in the U.S.A.*