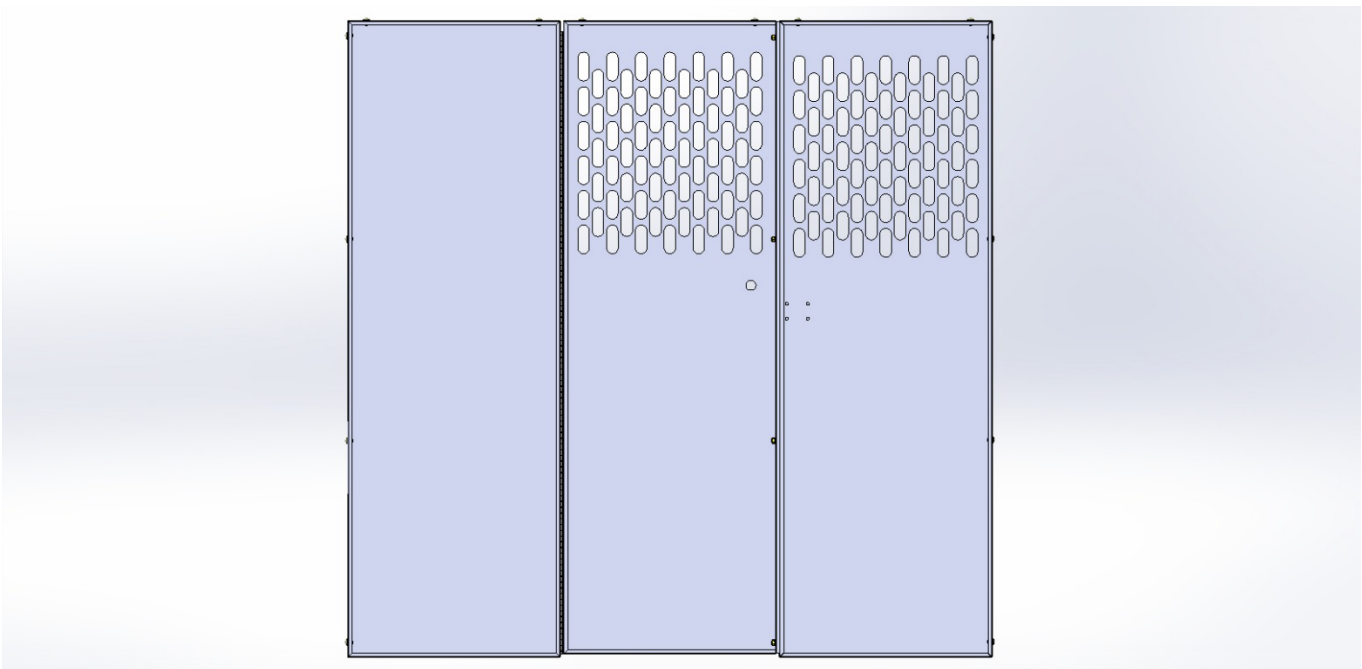
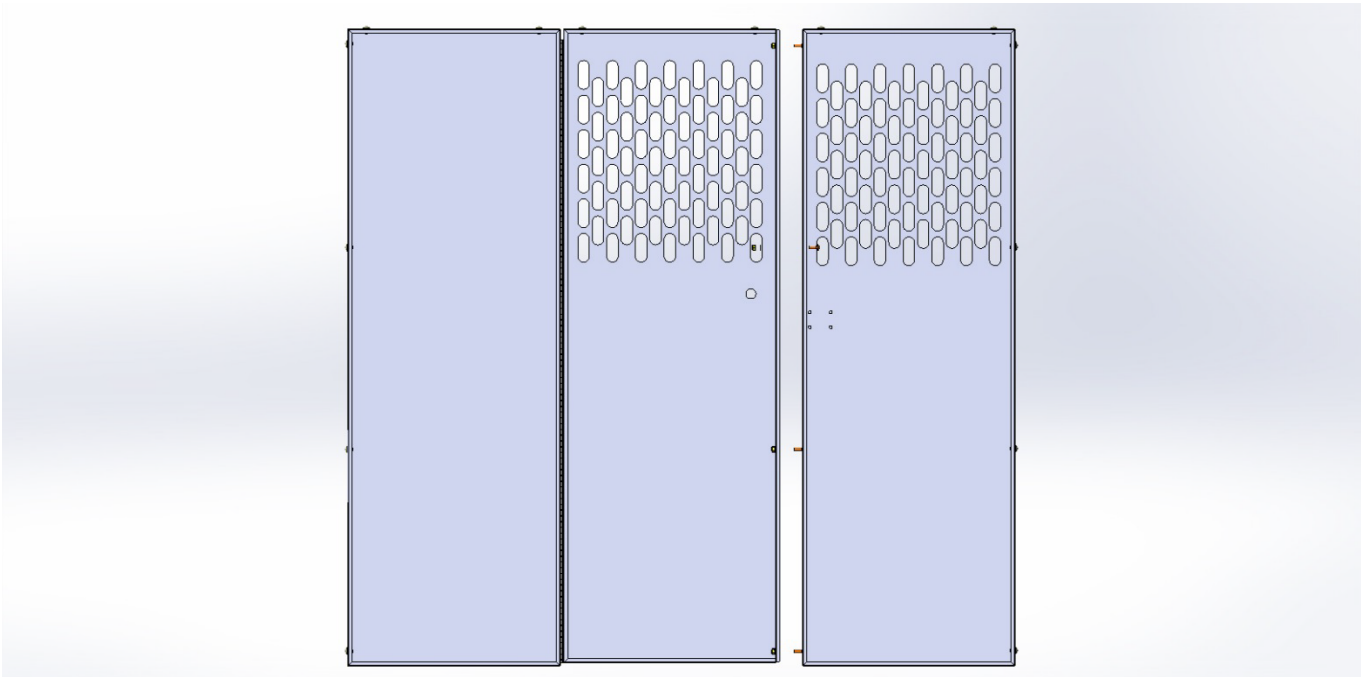




406TH

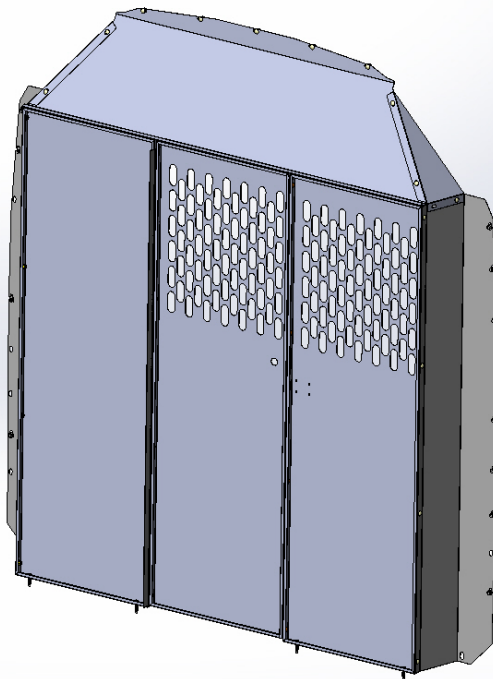
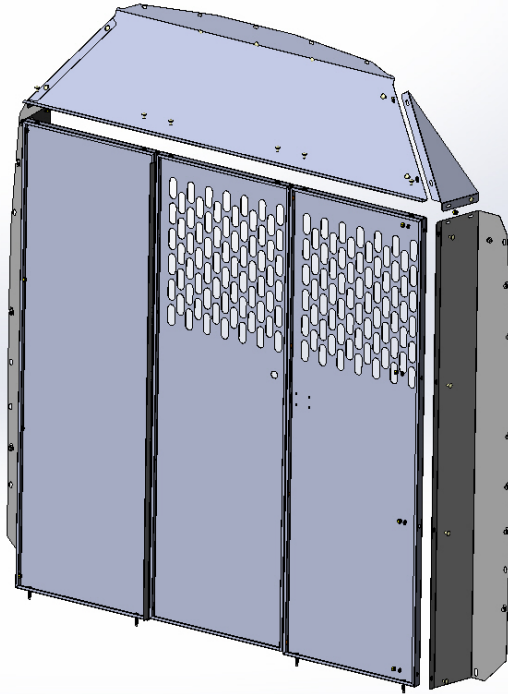
Step 1

Bolt "Partition Door Assy." To "Partition Side Panel" (Boxed as 40651) using 1/4x3/4 Carriage bolts, using 2 flat washers between them for clearance if you are planning to have a "pass through" door.



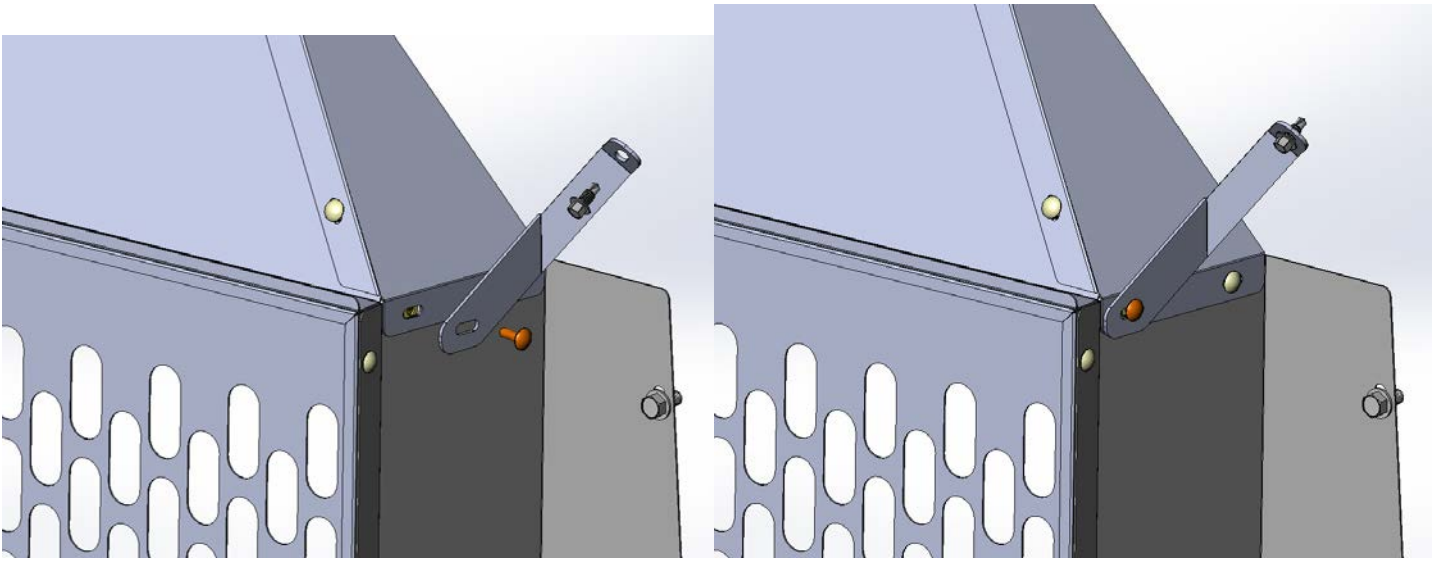
Step 2

Bolt "Wing Panels"(Box 406TH) to the "Partition Door Assy." Using 1/4x1/2 Carriage bolts with flat washers and nyloc nuts as shown. Be sure to use flat washers as spacers on the door panel between the "Top Wing Panel" and the door so it will open properly. Shown below in the Transit Mid-Roof configuration (100" Roof).

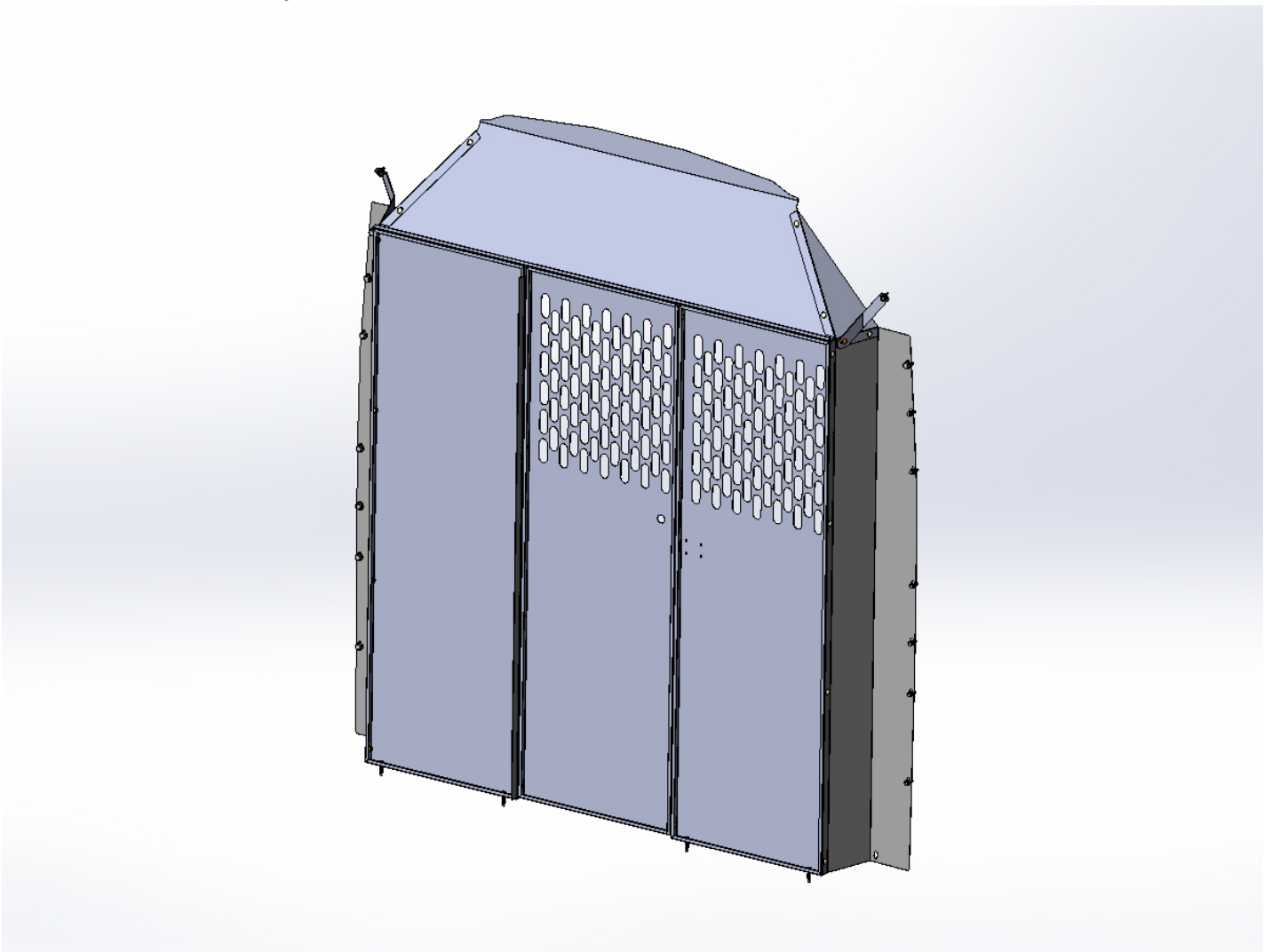


Step 2A

Now you can bolt the upper bracket in place using the 1/4"x3/4" carriage bolts, DO NOT tighten at this point.

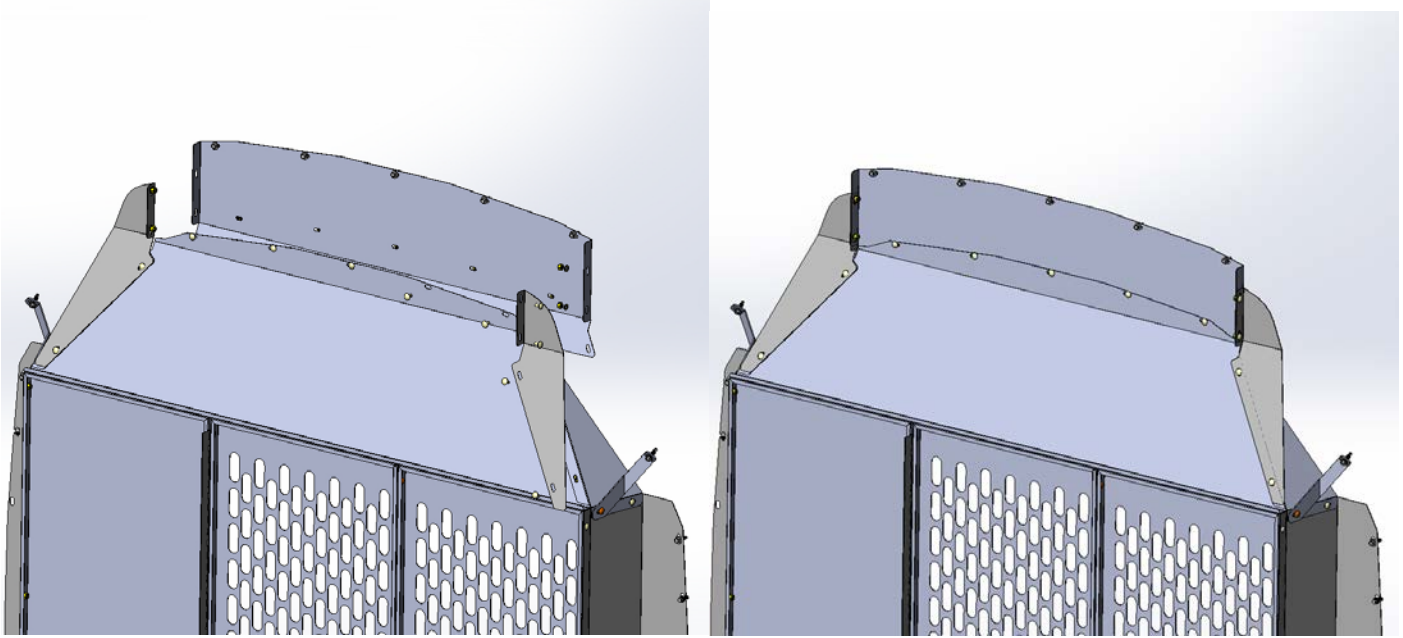


Transit Mid-Roof Assembly (100")

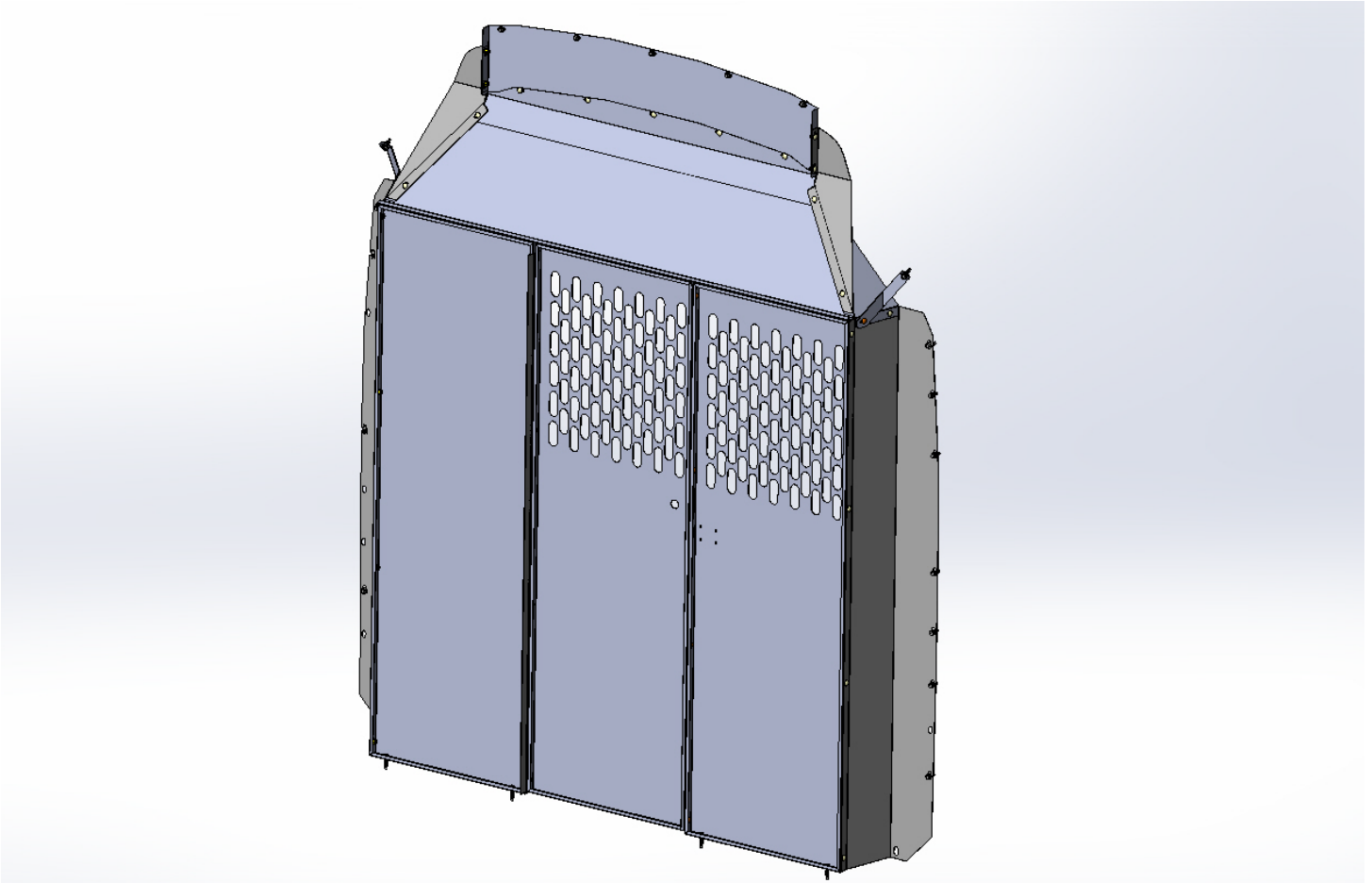


Step 2B (High Roof)

Shown below for a High-Roof Transit configuration (110" Roof). Add Top Panel extension and corner wing extensions as shown below.



Transit High Roof Assembly (110")

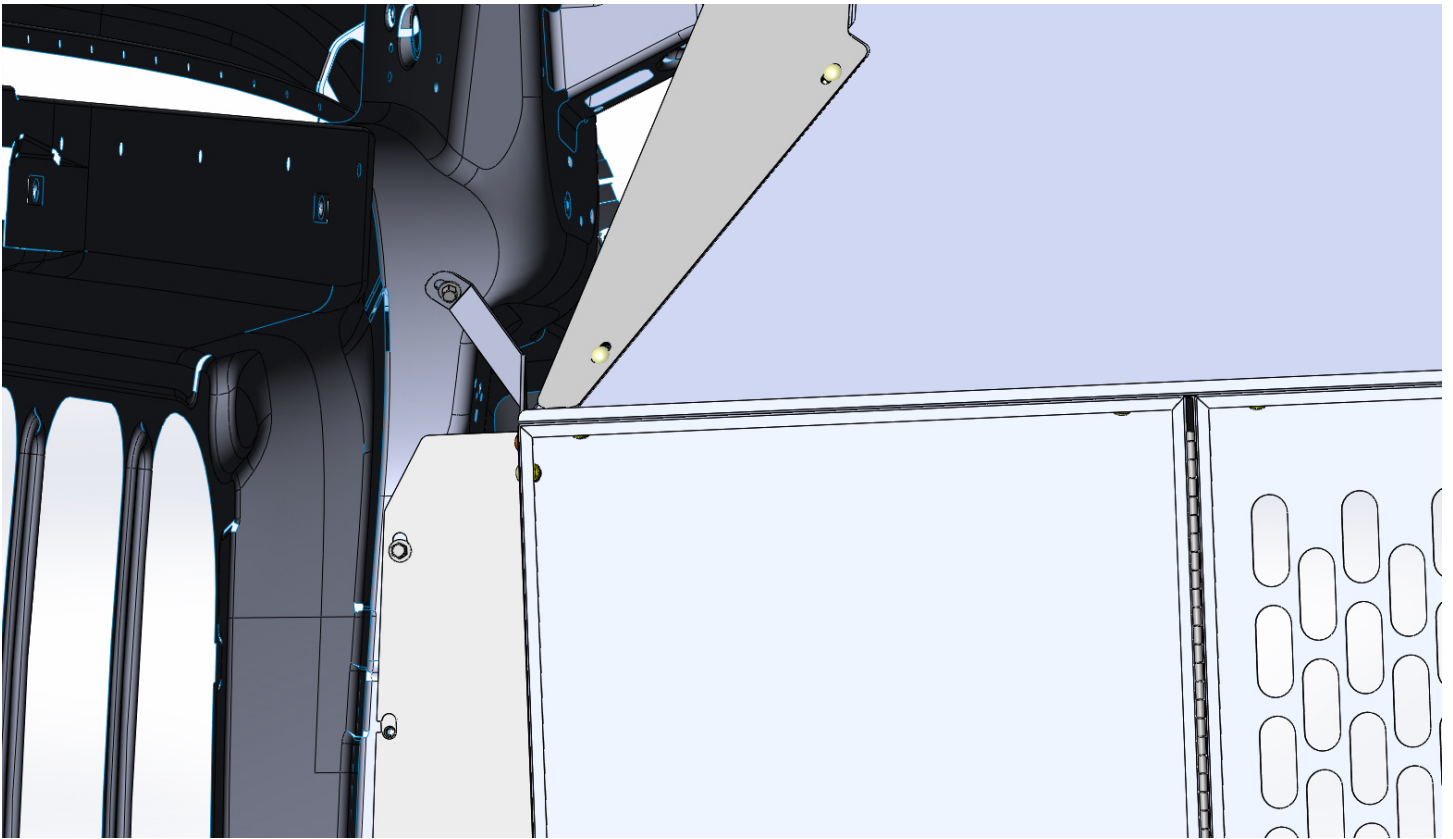


Step 3

On the driver's side install the 2 M6 U-nuts in the "B" pillar as shown below (Some of the Van body parts are excluded for clarity). If your van has the factory interior panels (it's an option) loosen the 2 bolts that hold the panel to the "B" pillar and slide the wing behind the bracket. Next use the 5/16"x1" self tapping screws on the driver's side wing panel, one in the top hole and one in the 3rd from the bottom and use the M6x25 bolt on the passenger side wing panel. Now you can bolt the upper bracket in place using the 5/16"x1" self tapping screws and ¼"x3/4" Carriage bolts. Put a straight edge along the bottom to keep it straight and use the 5/16"x1 ¼" self tapping screws into the floor. There are 5/16"x 1" self tapping screws for mounting the "Top Panel" if wanted, but NOT necessary. You can now re-install the factory "D" rings. Be sure to go back and tighten all the hardware at this point.



Transit-Driver Side Upper View



Transit-Passenger Side Upper View

